

Printer Driver Manual for Windows

Contents

1 . Function overview	4
1-1. Function overview	4
1-2. Operating Environment	4
2 . Format Setting	5
2-1 . Print orientation	5
2-2 . Paper Source	6
2-3 . Printing format setting	7
3 . Get Printer status	9
3-1 . Function	9
3-2 . Printer Properties setting	9
3-3 . Check status	10
3-4 . Error status and the way to remove the error	11
3-5 . Status API	12
4 . Revision records	13

Introduction

Please read the following terms and conditions of use before installing the software.
During installation, you are assumed to have agreed to the following terms and conditions of use.
If you do not agree to those, stop installing the software and delete all distributed files.

Caution

- This software is owned by SANEI ELECTRIC INC. (hereafter SANEI), and SANEI holds the copyright and other related rights for the product.
- SANEI grants the right of use of the software to users so that they may use the products of SANEI in relation to the software.
- This software cannot be modified in any form in whole or in part. However, it can be copied or distributed as you desire.
- SANEI assumes no responsibility with the failure of software and software itself.
- SANEI assumes no responsibility with respect to possible direct or indirect loss or damage resulting from use of the software.
- SANEI may change the specifications of the software without prior permission from or notification of the user.

*Microsoft Windows is a registered trademark of the Microsoft Corporation in the United States.

1 . Function overview

1-1. Function overview

The printer driver provides functions as Windows Printer from various software, which support printing function. The documents containing TrueType fonts or graphic data are printed after converting to monochrome graphics.

Additional utility function is realized for using various function like obtain error status of printers and set various format.

1-2. Operating Environment

OS:

- Microsoft Windows 7 (32bit / 64bit) SP1.
- Microsoft Windows 8. (32bit / 64bit) SP1.
- Microsoft Windows 8.1. (32bit / 64bit)
- Microsoft Windows 10. (32bit / 64bit)

Interface:

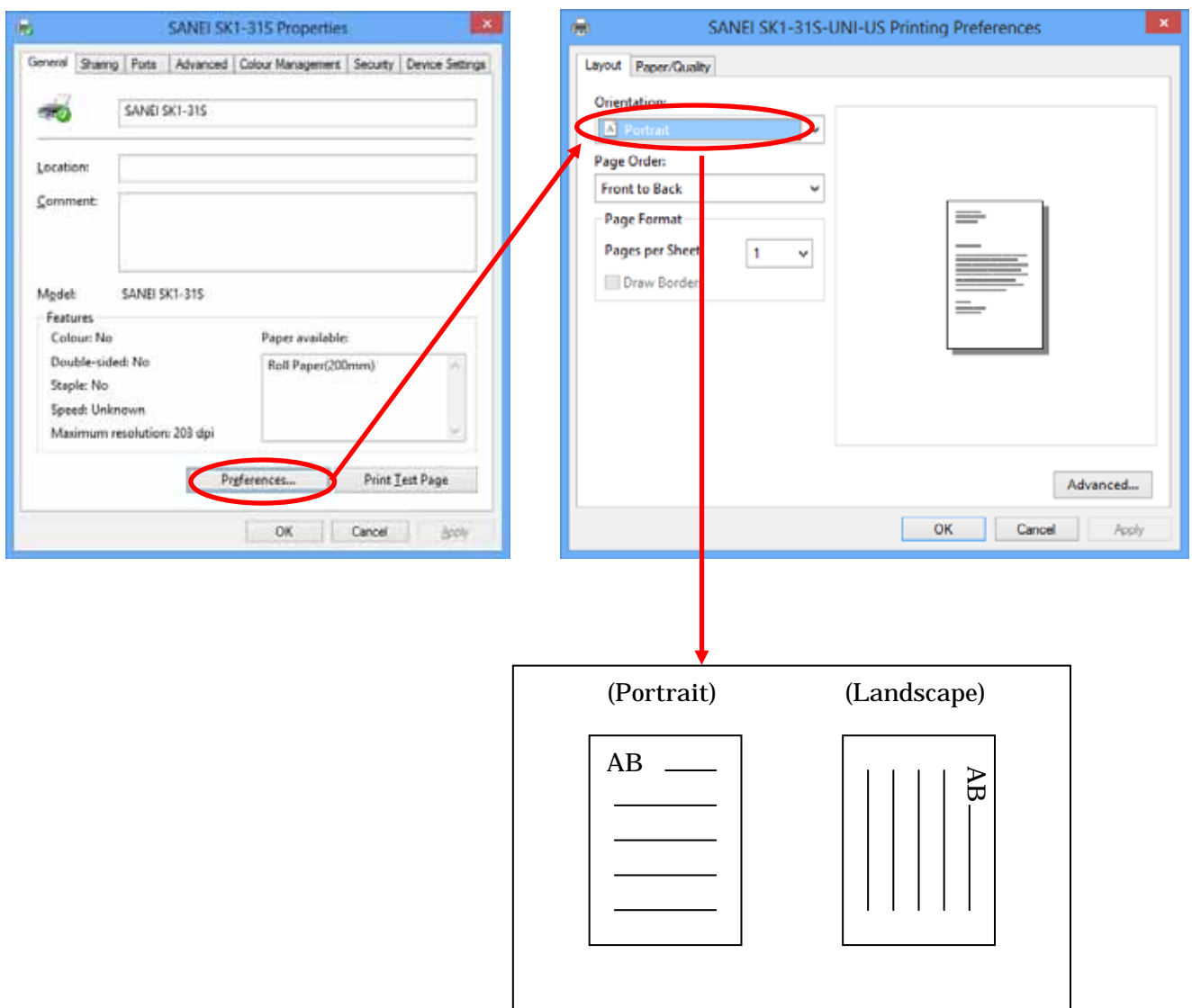
- USB / Printer class
- USB / Virtual COM
- Serial interface

2 . Format Setting

2-1 . Print orientation

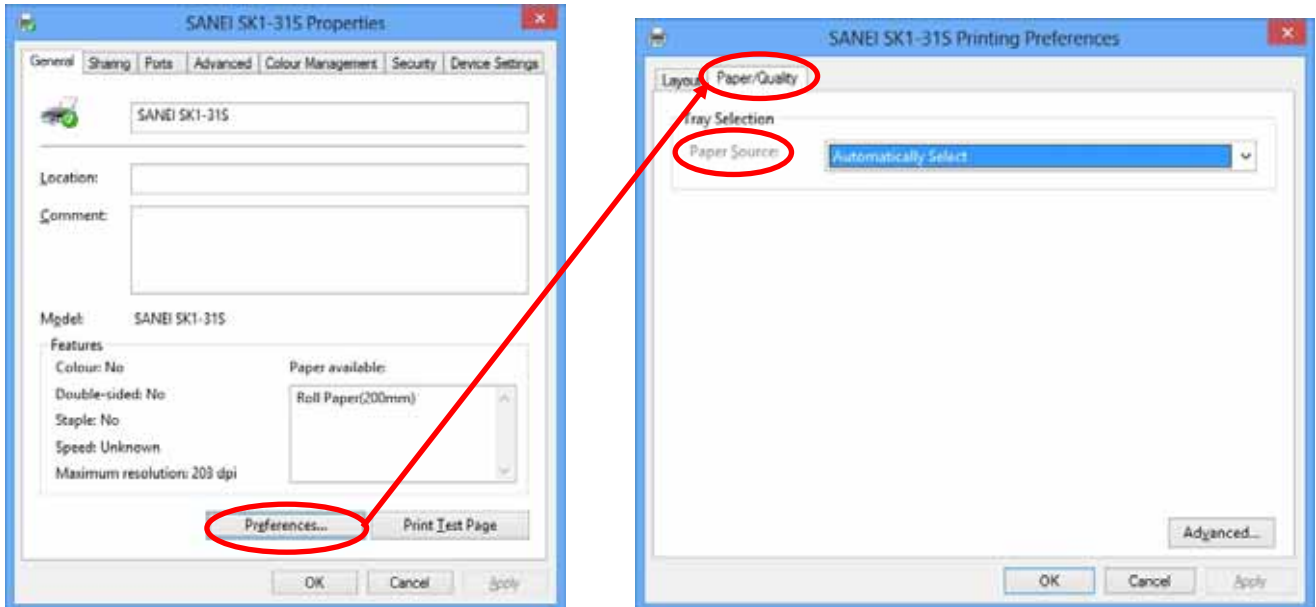
Orientation of printing can be set by 'orientation' of 'Preferences' in 'General' tab.

If the orientation can be set by an application, the setting by the application is given a priority over that of Properties.



2-2 . Paper Source

Paper source can be selected by 'Paper Source' of 'Preferences' in 'Paper/Quality' tab.



Variable length

Print by length of layout.

The length is depended on the page layout.

Fixed length

Print by the size of media set.

If the layout is shorter than the size of the media, it prints by the size of media.

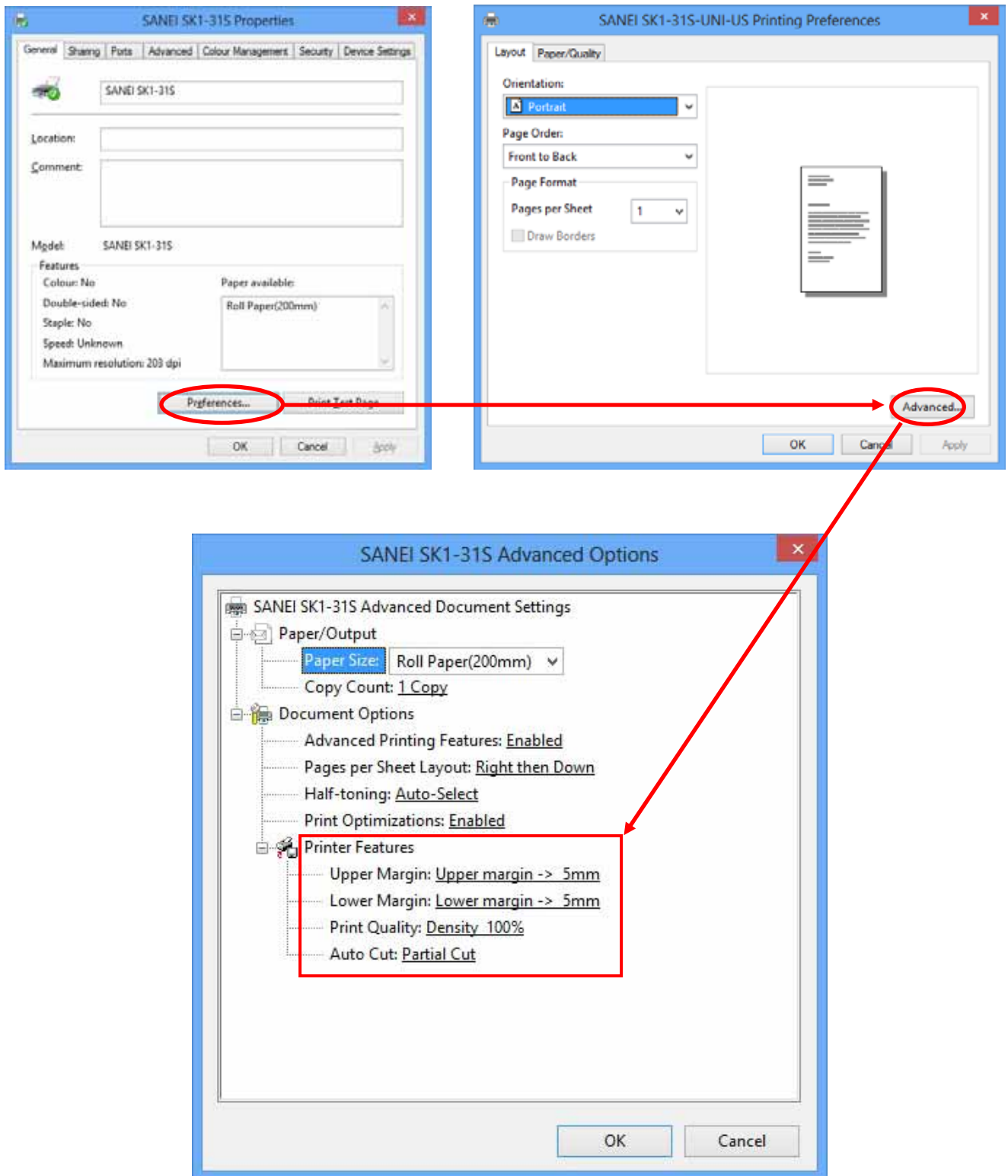
Automatically Select

Printing length can be switched fixed length and Variable length automatically by selected media size.

* If the setting is wrong, warning window is displayed, and correct the setting automatically.

2-3 . Printing format setting

Printing format can be select by 'Preferences' – 'Advanced.'



- List of setting

* The following item of settings are depended on type of printer.

- Paper Size

Select the paper size for printing

- Upper Margin

Insert upper margin page by page.

Setting area { 0mm , 5mm , 10mm , 15mm , 20mm }

- Lower Margin

Insert lower margin page by page.

Setting area { 0mm , 5mm , 10mm , 15mm , 20mm }

- Print Quality (Print density)

Select print density

Setting area { 60% , 80% , 100% , 120% , 140% , 160% }

The default setting is '100%'.

* 160% of the density is a parameter for using particular media that is not recommended.

Thus, if you select '160%', Sanei doesn't warrant the life and durability of printer, because of decreasing printer life. Please test enough the function of the setting at your company.

- Auto Cut

Select cutting function page by page.

- No Cut : Printer doesn't cut paper.
- Partial Cut : Cut paper without one point.
- Full Cut : Fully cut paper.

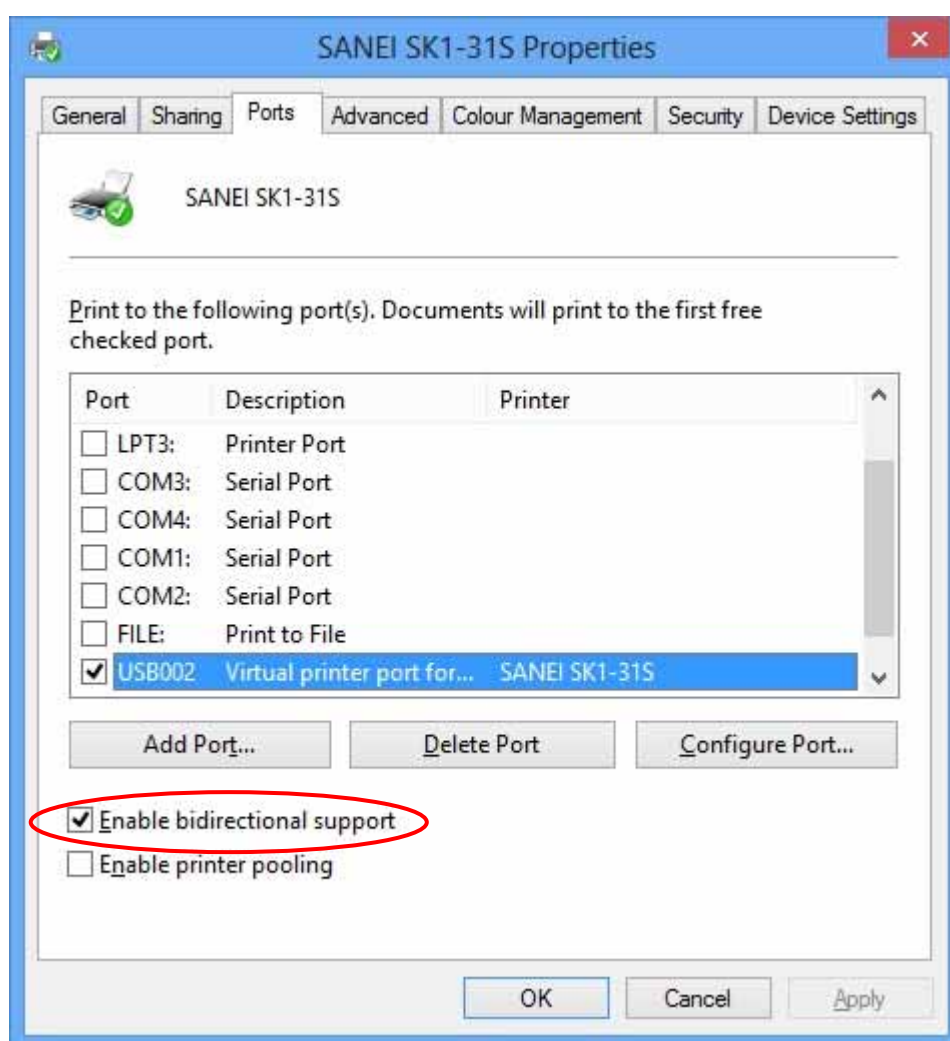
3 . Get Printer status

3-1 . Function

This driver is allowed to use bi-directional communication and it is realized to manage the printer to check the error status of the printer.

3-2 . Printer Properties setting

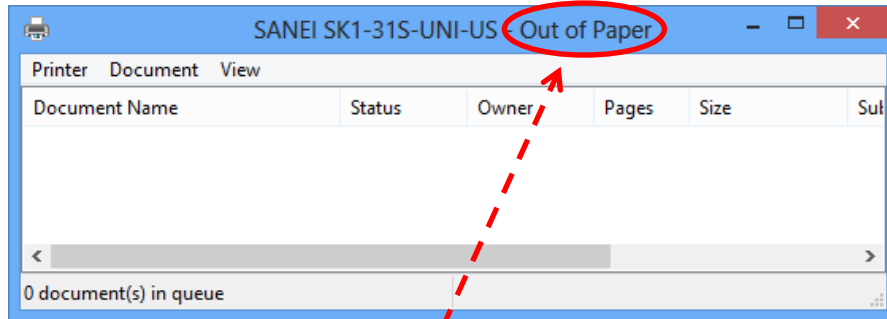
Open 'Printer property' and enable 'Enable bidirectional support'.
Default setting of this function at installing this driver is 'Enabled'.



3-3 . Check status

Printer status can be checked as follows.

EX) Out of paper



Error status	Messages
No error	No display
Power OFF, No cable is connect	Use Printer Offline
Paper end	Out of paper
Door open	Door Open
Near end	Paper Problem
Paper in presenter	Output bin full
Paper course out	Paper Jam
Voltage error, thermal error, Cutter error	User Intervention Required
Power OFF, No cable is connect	Use Printer Offline

3-4 . Error status and the way to remove the error

Status of printer error and the way to remove the errors are described as follows:

Printer errors	Message Printer Status Manager	How to remove the errors
Online	Non message	
Offline / No cable is connect	Offline	Turn ON power of printer and connect cable to it.
Paper out	No paper	Change the roll paper.
Head Open	Cover open	Close the printer head cover.
Paper Near-end	Paper low	Change the roll paper.
Paper in presenter (Bezel)	Paper is not taken	Remove the paper released from the presenter, or recover from the error by collecting the paper automatically after a few seconds.
Paper Jam	Paper Jam	Open the printer head or presenter, and remove the jammed paper.
Temperature Error	Hardware error	The printer resumes printing when the head temperature falls to 60 degrees C or lower.
Voltage Error	Hardware error	Automatically recover from the error by recovering voltage of power supply.
Cutter Error	Hardware error	Open the printer head cover and remove some dusts or rubbish which cause a trouble of cutter working, and then close the cover.

The printer status is obtained by using “GetPrinter” function of Win32API.
For further information, please see the below URL.

URL: <http://msdn.microsoft.com/en-us/library/windows/desktop/dd144911%28v=vs.85%29.aspx>

BOOL GetPrinter

(HANDLE hPrinter, DWORD Level, LPBYTE pPrinter, DWORD cbBuf, LPDWORD pcbNeeded)

[parameter]

HANDLE hPrinter:	Printer handle
DWORD Level:	A structure stored to a buffer, which pointed by pPrinter.
LPBYTE pPrinter:	A pointer to buffer which receive information about printer.
DWORD cbBuf:	Set a size of buffer pointed by pPrinter per “byte”.
LPDWORD pcbNeeded:	A pointer to a variable receiving a size of printer’s information.

[printer status]

The information of printer status received by pPrinter is as follows:

PRINTER_STATUS_PAPER_OUT:	out of paper
PRINTER_STATUS_DOOR_OPEN:	paper cover is opened.
PRINTER_STATUS_PAPER_PROBLEM:	Near end
PRINTER_STATUS_USER_INTERVENTION:	Voltage error, thermal error, Cutter error.
PRINTER_STATUS_OUTPUT_BIN_FULL:	Paper in presenter or bezel unit
PRINTER_STATUS_PAPER_JAM	paper course out/JAM (presenter or bezel unit)
Other values:	No error

[Return]

“0”: if function is failed. “other digit” means success.

4 . Revision records

Ver No.	Date of revision	Details
Ver 1.01	MAY/2015	New creation
Ver.1.02	Nov/2016	Additionally Corresponding to Windows10.